

## Dual Servo, Positive Rod Displacement, No Reload Meter



Patent  
Pending

**Servo-Flo 608 Variable Ratio Meter**

### Dual Servo Drive Meter Mix Dispense System

Servo-Flo 608 is ideal for high speed automated and robotic dispensing applications which have a short time duration between dispensing cycles. This system meters, mixes and dispenses 2-component materials in high volume production applications and can handle multiple parts having different volumes.

The dual servo-drive design feature allows the use of multiple formulations and the ability to adjust the material ratio at the control panel. This prevents having to mechanically change the metering assemblies.

- ▶ Ideal for high speed, 2-component robotic and automation dispensing systems
- ▶ Positive Rod Displacement metering principle dispenses on each up/down stroke and eliminates reload cycle time
- ▶ Dual servo drive motors allows controller to set and select multiple ratios and flow rates
- ▶ Positive Rod Displacement technology provides the highest dispensing volume performance and ratio accuracy precision
- ▶ Flow rate profile is variable during dispense while maintaining ratio
- ▶ Designed for low to high viscosity unfilled and abrasive 2-part adhesives and sealants
- ▶ Includes wear resistant wetted components and long life seals
- ▶ Able to dispense varying shot sizes throughout the dispense cycle

### Typical Applications

- Robotic and automated dispensing
- High speed potting and mold filling
- Robotic extruded bead profiles
- High volume dispensing systems
- Varying the dispense speed in cycle
- Multiple shot volumes per part
- Multiple material formulations

# Servo-Flo<sup>®</sup> 608 - Variable Ratio Meter



## Specifications:

- Dual independent AC servo motors
- Positive rod displacement meter cylinders
- 1:1 to 20:1 variable ratio range
- Up to 200 cc per second flow at 1:1 ratio
- Rugged production proven component technology for extended working life
- Compatible seals for A and B materials
- Supply Pump, Supply Tank with Pump or Supply Tank material supply
- Meter handles 2-part epoxy, silicone, urethane and acrylic materials
- NEMA 12 control panel with standard Allen Bradley components and modules

## Engineered Features:

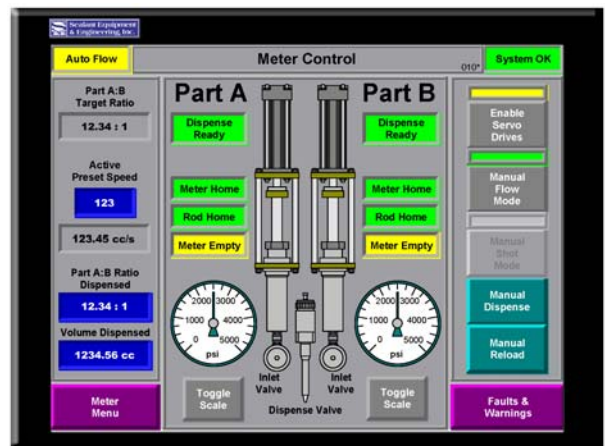
- Frame or Cart mounted meter system
- Configured for abrasive materials
- Heat and cool or heat-only material temperature control with water or electric units
- Pumps and Tanks for material supplied in 5gal, 55 gal, totes and day tanks
- Material filters available when required
- Carts available to support complete mater system including supply pumps or tanks, meter and control panel, boom assembly
- Variable hose lengths to automatic or manual 2-component mix and dispense valve
- 2-Year standard warranty with each system

## Mixers:



We offer the widest selection of static, dynamic, automatic, manual, ambient and heated mixers for your application

## Controls:



A variety of interface platforms are available. Shown is the PanelView 600 "Meter Control" operator interface screen

Form SF608-001



Manufacturers of Precision Dispense Systems & Valves

45677 Helm Street • P.O. Box 701460  
Plymouth, MI 48170 • USA  
Phone: (734) 459-8600 Fax: (734) 459-8686  
Web: [www.SealantEquipment.com](http://www.SealantEquipment.com)  
E-mail: [sales@SealantEquipment.com](mailto:sales@SealantEquipment.com)