

### Fixed-Ratio, Positive-Rod Displacement, Servo-Motor Metering



Servo-Flo 505 Meter Assembly mounted on Floor Stand with Fluid Control Valves and DeviceNet interface panel

- ▶ Servo Motor drive metering provides the most accurate dynamic flow rate available for precise material delivery
- ▶ Designed without a separate Ball-Screw for fewer parts to maintain, purchase and repair
- ▶ Positive Rod Displacement Meter delivers repeatable, reliable and true volume dispensing
- ▶ Fixed Ratio Metering assures the 2-component materials are consistently metered on-ratio
- ▶ Metering components are engineered and selected for ratio, volume, material compatibility and longer production life performance
- ▶ Meter System is designed with longer-life air-powered flow control valves and material pressure regulators as required for reliable and accurate material flow control
- ▶ System is designed to extrude or stream various bead profiles with highly repeatable precision
- ▶ Dispense flow rate is variable along the bead path and coordinated with robot tool tip speed
- ▶ Select from three (3) levels of Operator Interface Controls with easy to understand touch-screens

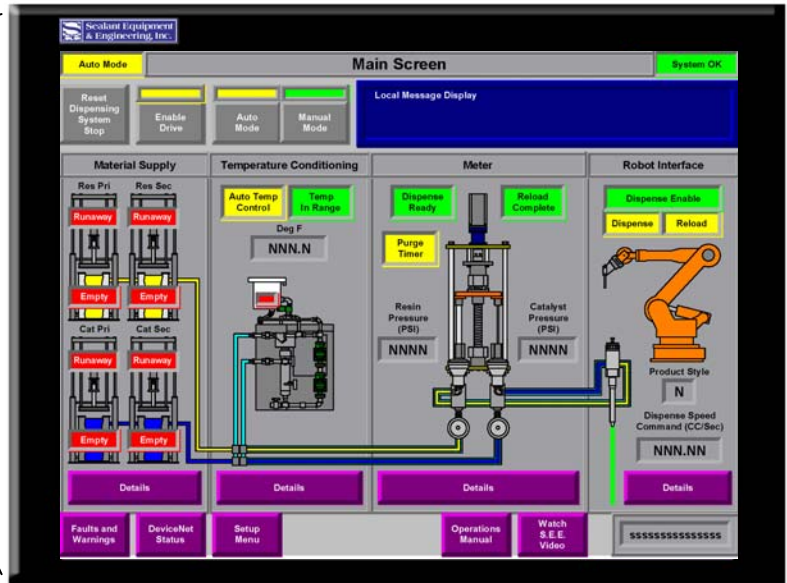
#### **Complete Engineered System Features:**

- Servo-Flo 505 Servo-Drive Metering Assembly
- Control Panel Assembly with Operator Interface
- 2-Part Dispense Valve: Snuf-Bak or No-Drip
- Mixer and Metal Shroud: Extruding or Streaming
- 2-Part Supply Pumps with Pump Controls
- Hoses Selected for Flow Rate and Mix Ratio

#### **Available Features:**

- Supply Pumps with Automatic Crossover Control
- Integrated Material Temperature Control System
- DeviceNet Interface of entire dispensing system
- Robot Integration and Engineering Services
- Robot Tooling & Dress-Out Design and Assembly
- Robot Cell Bead Path Programming

# Servo-Flo<sup>®</sup> 505 Robotic Dispense System



All New Color Touch Screen  
Operator Interface System Control

Touch-Screen System Control Panel with  
integrated temperature control system  
and DeviceNet interface



System Integration, Robot Tooling, Dress-Out,  
Bead-Path Programming and System Run-Off  
is performed at Sealant Equipment & Engineering



The Servo-Flo 505 Meter is bracket  
mounted for Robot, Fence or  
Pedestal mounting

Form SF505-001



Manufacturers of Precision Dispense Systems & Valves

45677 Helm Street • P.O. Box 701460  
Plymouth, MI 48170 • USA  
Phone: (734) 459-8600 Fax: (734) 459-8686  
Website: [www.SealantEquipment.com](http://www.SealantEquipment.com)  
Email: [Sales@SealantEquipment.com](mailto:Sales@SealantEquipment.com)