

Precision 2-Component Meter-Mix and Dispense System



Servo-Flo 488 Meter System with Control Panel,
Inlet Fluid Pressure Regulators and Control Valves

- ▶ **The Servo-Flo 488 is a fixed-ratio positive rod displacement meter system**
- ▶ **Digital servo drive with closed loop position insures precision flow rate and volumes**
- ▶ **Dispense precision shot volumes, extrude beads or continuously dispense infinite volumes in large filling/potting applications**
- ▶ **Designed for automated, semi-automated or manual dispensing using a hand-actuated trigger, foot pedal actuator or input signal from automation**
- ▶ **Electronically change shot size volume for different product requirements**
- ▶ **Select a variable profile flow rate during the dispense cycle for optimum dispensing**
- ▶ **Touch screen operator interface is easy to setup and use with password protection**

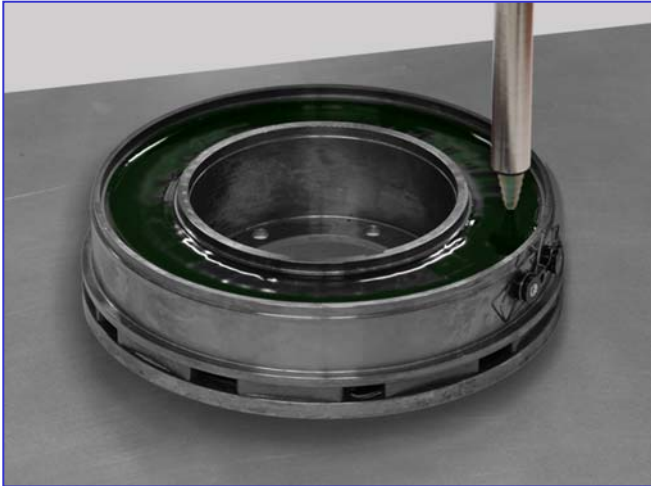
Servo-Flo® 488 meter-mix dispense system is ideal for automated or manual high volume dispensing applications. The servomotor design is ideal for manufacturers wanting one system to dispense small, medium and large volumes of a mixed material for different sized part batches or long and large extruded bead sizes.

This positive rod displacement meter system can be used as a shot meter from as small as 3cc to 1400 cc and as a continuous flow dispensing meter for infinite volume sizes of 2-part epoxies, urethanes, silicones and acrylics. The servomotor design provides fixed rate or variable flow rate profiling which varies the dispense rate on-ratio as needed to optimize filling operations, meet bead diameter requirements and automation tip-speeds.

Three levels of operator interface controls are available to handle any meter-mix production dispensing application. The system control quickly sets output flow rates and adjusts material volume settings. The automation or the operator can select different stored flow and volume programs for different product dispensing requirements.

The meter system accepts low- to high-viscosity materials and is supplied by pumps or pressure tanks. The Servo-Flo 488 meter, control panel and supply can be floor-mounted, portable-cart mounted or enclosed in a cabinet with many dispensing features.

Servo-Flo 488 Precision Meter System



The Servo-Flo 488 is ideal for precision potting of electronic components where precisely changing the flow rate during dispense improves part quality and quickly selecting preset and stored dispensing volumes and speeds increases production rates.

SYSTEM FEATURES

- Volume sizes and flow rates are set and changeable through the operator interface.
- Extruded Beads: The control accepts an operator pre-set or a remote 0-10v analog input signal from your automation to produce a constant bead while turning tight corners or a variable dispense flow rate for changing diameters.
- Shot Applications: Enter and select from a variety of preset shot profiles. A shot profile has several segments with each segment having its own volume and flow rate settings. Transitions between segments within a profile are blended, insuring smooth, uninterrupted material flow.
- Volume monitoring verifies amount of material dispensed; usage data is collected and can be downloaded
- Auto Purge with adjustable warning and fault timers and purge volume.
- Optional footswitch or hand trigger is available for manual or semi-automatic dispensing.
- Contact closures, wired to terminals, are provided for status interlocks to customer. Discrete interlocks from customer require contact closures for our 24V DC signals.

The widest selection of No-Drip™ and Snuf-Bak™ Mix and Dispense Valves in the industry.



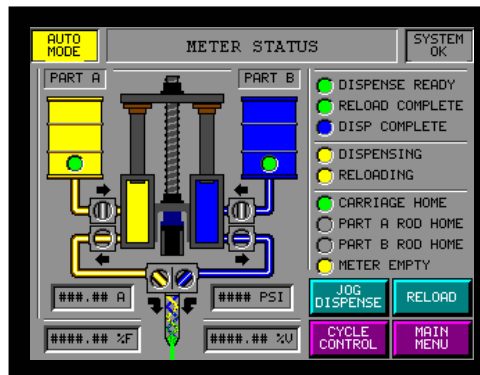
Automatic
2-Component
Mix Dispense
Valve



Manual
2-Component
Mix Dispense
Valve

TYPICAL APPLICATIONS

- Filter Element: End Cap Molding, Element Bonding, Sealing
- PC Board: Potting and Encapsulating Boards and Containers
- Power Transmission: Potting Electric Clutches and Brakes
- Electro-Mechanical: Potting Switches, Relays and Solenoids
- Power Transformers: Potting, Coil Winding Impregnating
- Motor Assembly: Coil Winding Coating and Impregnating
- Magnetics: Potting and Coil Winding Coating



Easy to understand touch-screen allows you to select the exact volume and flow rate of metered material

Form SF488-002-A



Manufacturers of Precision Dispense Systems & Valves

45677 Helm Street • P.O. Box 701460
Plymouth, MI 48170 • USA
Phone: (734) 459-8600 • Fax: (734) 459-8686
Visit us at www.SealantEquipment.com
Email us at sales@sealantequipment.com